



18th Annual Spring CONSTRUCTION & CONTRACTING EQUIPMENT AUCTION

AT THE ADAMS COUNTY FAIRGROUNDS
9755 Henderson Rd., Henderson, (Brighton) Colorado
THURSDAY • MARCH 13th • 9:00 A.M.

Inspection: Wednesday, March 12th from 9:00 A.M. to 4:00 P.M.



DUMPTRUCKS

BACKHOE/
LOADERS

MOTOR
GRADERS

SCREEN

TRENCHERS &
CABLE PULLER

FORKLIFTS

FLATBEDS
TRUCKS

CRAWLER/
DOZERS

FLATBED
TRAILERS

EQUIPMENT
TRAILERS

CRANES

UTILITY
TRUCKS

WATER
TRUCKS

COMPACTION
EQUIPMENT

TRUCKS, CARS
& SUV's

- SELLING FOR -

ADAMS, JEFFERSON, WELD
COUNTIES, QWEST, XCEL
ENERGY, SUNBELT RENTALS,
WAGNER RENTS,
GOVERNMENT AGENCIES
PLUS: LOCAL CONTRACTORS
AND RENTAL YARDS

Bid On-Site or On-Line
from your desktop at
www.proxibid.com

www.proxibid.com

A 3% Buyers' Premium
will be applied to all
internet purchases

WHEEL
LOADERS

SKID
STEERS

HYDRAULIC
EXCAVATORS

BOOM LIFTS

HYDRAULIC
TAIL TRAILER

STREET
SWEEPERS

FLOATER

GENERATORS

VAN BODY
TRUCKS

TRACTOR/
LOADERS

TRUCK
TRACTORS

LOWBOY
TRAILERS

STORAGE
CONTAINERS

BELLY DUMP
TRAILERS

END DUMP
TRAILERS



**1999 JOHN DEERE 624H
WHEEL LOADER**



**2006 CATERPILLAR 420E
BACKHOE/ LOADER W/ 781 HRS.**



**INTERNATIONAL FLOATER 4030,
4WD, W/ CUMMINS**



**2002 JOHN DEERE 200C-LC
HYDRAULIC EXCAVATOR**

Roller & Associates, Inc.

7500 York St. • Denver, CO 80229 • (303)289-1600 • Fax:(303)853-4384 • www.rollerauction.com



1992 JOHN DEERE 644E WHEEL LOADER, COUNTY MACHINE



1997 VOLVO L90C WHEEL LOADER



1997 HITACHI EX200-5 HYDRAULIC EXCAVATOR, COUNTY MACHINE



1998 JOHN DEERE 310E 4WD BACKHOE/ LOADER



JOHN DEERE 770BH MOTOR GRADER W/ RIPPER

WHEEL LOADERS

2003 **Caterpillar** 924G Wheel Loader w/ Fork Attachment, Hydraulic Quick Coupler, s/n CAT0924GCCDA00657
1999 **John Deere** 624H Wheel Loader, EROPS, A/C, Heat, Stereo, 3 1/2 Yd. Bucket, 20.5-R25 Tires, s/n DW624HX571387
1998 **John Deere** 624H Wheel Loader, 20.5-25 Tires, s/n DW624HX567897
Caterpillar 950F Wheel Loader, s/n 4DJ03828
1997 **Volvo** L90C Wheel Loader, Quick Coupler, 20.5-25 Tires, s/n L90CV62544
1992 **John Deere** 644E Wheel Loader, 3.75 Yd. Bucket, 7646 Hrs, 23.5-R25 Tires, Heat, County Unit, s/n DW644EB535451
Fiat Allis FR15B Wheel Loader, s/n 595250
John Deere 644A Wheel Loader, s/n 178203T
Fiat Allis 545B Wheel Loader, s/n 4395
Dresser 510 Wheel Loader, 16.9-24" Tires, s/n 8858
Michigan 275B Wheel Loader, 29.5-29 Tires, s/n 425C549

HYDRAULIC EXCAVATORS

2002 **John Deere** 230-C LC Hydraulic Excavator, 42" Bucket w/ Hydraulic Thumb, 28" Tracks, Cab, Heat, A/C, 4700 Hrs, Stereo, s/n FF230CX603180
2002 **John Deere** 200C LC Hydraulic Excavator, 42" Bucket w/ Hydraulic Thumb, 28" Tracks, Cab, Heat, A/C, 5160 Hrs, Stereo, s/n FF200CX503198
1997 **Hitachi** EX200-5 Hydraulic Excavator, 5976 Hrs, 48" Bucket w/ PSM Thumb Attach, 32" Tracks, A/C, Heat, s/n AUE-2679
1994 **Caterpillar** 322L Hydraulic Excavator, 50" Bucket, 32" Tracks, s/n 9RL00575
John Deere 690A Hydraulic Excavator, s/n 001109T
2003 **Bobcat** 331D Mini Excavator, 930 Hrs, Kubota Diesel, Rubber Tracks, 12" Bucket, 5' Backfill Blade, s/n 232514799

BACKHOE/ LOADERS

2006 **Caterpillar** 420E Backhoe/ Loader, 4WD, Extendahoe, Aux. Hydraulics, 781 Hrs, s/n CAT0420ECHLS01656
1998 **John Deere** 310E Backhoe/ Loader, 4WD, EROPS, 24" Bucket, s/n T0310EX848334
Case 580 Super K Backhoe/ Loader, 4WD, EROPS, s/n JGG0172360
Caterpillar 416 Backhoe/ Loader, 4WD, EROPS, 24" Bucket, s/n 5PC04688
Case 580E Backhoe/ Loader, Extendahoe, EROPS, 24" Bucket, s/n 170334727
Ford 655A Backhoe/ Loader, 4WD, EROPS, 24" Bucket, s/n C777369

MOTOR GRADERS

2000 **John Deere** 770CH Motor Grader, 14' Moldboard, 14.00-R24 Tires, Ex County Machine, s/n DW770CH575394
John Deere 770BH Motor Grader, 14.000-R24 Tires, Ex County, s/n DW770BH542107
1987 **John Deere** 770BH Motor Grader, 14' Moldboard, Rear Ripper, 14.00-24 Tires, s/n DW770BH513173
1984 **Komatsu** GD505A-2 Motor Grader, Cab, Heat, A/C, 14' Moldboard, 5475 Hrs, County Unit, s/n 60060
Caterpillar 112 Motor Grader, Pony Motor, 13.00-24 Tires, 12' Moldboard, s/n 3U2382
Allis Chalmers M100B Motor Grader, Front Scarifier, 14' Moldboard, 14.00-24 Tires, s/n 1650



CATERPILLAR 950F WHEEL LOADER



1998 JOHN DEERE 624H WHEEL LOADER



CATERPILLAR 322L HYDRAULIC EXCAVATOR



CASE 580 SUPER K 4WD BACKHOE/ LOADER



KOMATSU GD505A-2 MOTOR GRADER, CITY UNIT



2000 CASE 1845C SKID STEER LOADER



2005 NEW HOLLAND LT185.B TRACK SKID STEER LOADER



2003 BOBCAT S300 SKID STEER LOADER



CATERPILLAR D6D CRAWLER/ DOZER



2001 STERLING W/ MANITOWOC 28-TON CRANE

SKID STEER LOADERS

2006 **Caterpillar** 247B Track Skid Steer, 971 Hrs
2004 **Caterpillar** 287B Track Skid Steer Loader, Cab, Heat, A/C, Hydraulic Coupler, 790 Hrs, s/n ZSA00395
2005 **Caterpillar** 242B Track Skid Steer Loader, 550 Hrs, s/n BXM01753
2003 **Caterpillar** 226 Skid Steer Loader, 980 Hrs, Auxiliary Hydraulics
2001 **Caterpillar** 262 Skid Steer Loader, s/n CED00197
2005 **New Holland** LT185.B Track Skid Steer Loader, Hi-Flow, Heated Cab, Rubber Tracks, 2286 Hrs, 2-Spd., s/n N5M416167
2005 **Bobcat** T300 Track Skid Steer Loader, Turbo, s/n 525413589
2004 **Bobcat** T300 Track Skid Steer Loader, Turbo, s/n 525413152
2004 **Bobcat** T300 Track Skid Steer Loader, Turbo, s/n 525413147
2003 **Bobcat** S300 Skid Steer Loader, Auxiliary Hydraulics, Turbo, s/n 521513431
2002 **Bobcat** S300 Skid Steer Loader, Auxiliary Hydraulics, Turbo, s/n 521511456
2001 **Case** 60XT Skid Steer Loader, 1493 Hrs, Auxiliary Hydraulics, s/n JAF0349480
2001 **Case** 1845C Skid Steer Loader, Auxiliary Hydraulics, s/n JAF0333267
2000 **Case** 1845C Skid Steer Loader, 4447 Hrs, Auxiliary Hydraulics, s/n JAF0295074
2000 **Case** 1845C Skid Steer Loader, 4868 Hrs, Auxiliary Hydraulics, s/n JAF0314386
Case 1845C Skid Steer Loader, Auxiliary Hydraulics, s/n JAF191846
Case 1840 Skid Steer Loader, Auxiliary Hydraulics, s/n JAF66115
Case 1835 Skid Steer Loader, s/n JAF0037297
2000 **John Deere** 260 Skid Steer Loader, Bucket & Forks, 1843 Hrs, Auxiliary Hydraulics, s/n KV0260E261045
John Deere 7775 Skid Steer Loader, Auxiliary Hydraulics, 1546 Hrs, Airboss Tires, s/n MO7775X020212
1998 **Daewoo** DSL601 Skid Steer Loader, 1446 Hrs, Auxiliary Hydraulics, s/n AA01293
Mustang 2070 Skid Steer Loader, Auxiliary Hydraulics, s/n SG98D000529
Bobcat 773 Skid Steer Loader, Bucket w/ Hydraulic Grapple, s/n 519018713
Bobcat 873 Skid Steer Loader, Bucket w/ Hydraulic Grapple, s/n 514111622
Gehl SL5625 Skid Steer Loader, Bucket w/ Hydraulic Grapple, s/n 11242
New Holland LX865 Skid Steer Loader, Turbo, Bucket w/ Hydraulic Grapple, s/n 878932

CRAWLER/ DOZERS & SCRAPER

Caterpillar D6H Crawler/ Dozer, Cab, Semi U 10' Blade, 24" Tracks, s/n 6CF4241
1983 **Caterpillar** D6D Crawler/ Dozer, 20" Tracks, Ripper Valve, Enclosed Cab, Rebuilt Transmission. Steering Clutches & Torque Converter, s/n 20X4043
Caterpillar D6D Crawler/ Dozer, ROPS, s/n 4X10093
Caterpillar 627 Scraper, s/n 68M603

CRANES

2001 **Sterling** Crane Truck w/ Manitowoc Mod. M2892S Boom, s/n 44603, 28-Ton Capacity, 92' Stick, 3-Section Boom, Cat 3126, 15-Spd, 134K Miles, T/A, Front & Back Outriggers
Grove RT60S Rough Terrain Crane, 18-Ton Capacity, Detroit Diesel, Outriggers, 20.5-R25 Tires, s/n 19165
Lorain LRC180 Mobile Crane, 18-Ton Capacity, s/n 79414



2001 CASE 60XT SKID STEER LOADER



2004 CATERPILLAR 287B TRACK SKID STEER LOADER



2000 JOHN DEERE 260 SKID STEER LOADER



CATERPILLAR D6D CRAWLER/ DOZER W/ CAB



GROVE RT60S ROUGH TERRAIN CRANE

FORKLIFTS

(2) **Hyster H100XL** Forklifts, 10000 lb. Capacity, Duals, Side Shift, Perkins Diesel, 69" Forks, 162" Lift
Hyster H135XL Forklift, Gas, 13000 lb. Cap, Duals, Cab, Side Shift, 173" Lift, 5' Forks
Caterpillar T150D Propane Forklift, 15000 lb. Capacity, Solid Tires, Side Shift, 202" Lift, 54" Forks
 (3) **Nissan 5000** lb. Propane Forklifts, Solid Tires, 187" Lift
Hyster S50XL Propane Forklift, 5000 lb. Capacity Solid Tires, 206" Lift
Caterpillar T150E Propane Forklift, 5000 lb. Capacity Solid Tires, Side Shift
Yale Propane Forklift, 5000 lb. Capacity, Solid Tires, Side Shift, 194" Lift

REACH FORKLIFTS

Caterpillar RT80 Reach Forklift, 8000 lb. Capacity, 36" Reach, 4WD, Crab Steering, s/n 1GJ00923
Dynalift Reach Forklift, 9000 lb. Capacity, Detroit Diesel

TRENCHERS & CABLE PULLERS

1998 **Vermeer V5750** Ride-On Trencher, Back hoe Attachment, Engine Problem, 1349 Hrs, Backfill Blade, s/n 1VRM082Z4W1000646
Bobcat Ride-On Trencher, Diesel
 (5) **Ditchwitch 410SX** Cable Pullers w/ Trencher & Rotowitch Attachments, Low Hrs.
 1997 **SDP EZ-Hauler EZ Hauler/ Mobile Digger** Derrick Unit w/ IMT Crane, Posthole Digging Attachment, Onan Gas Engine, 737 Hrs, Hydraulic Problem

SCREEN

2006 **Power Screen** Power Grid 800 Screen w/ 1" & 2" Screens, Single Axle Carrier, 1411 Hrs. Deutz Diesel, 58" Belt, s/n 7220772

TRACTOR/ LOADERS

2006 **Kubota L4330** Tractor, 4WD, HST, PTO, 3-Pt., 62 Original Hrs, s/n 33755
 2000 **John Deere 4200** Tractor/ Loader, HST, 4WD, Diesel, 1425 Hrs, PTO, 3-Pt., s/n H321447
 2000 **John Deere 4200** Tractor/ Loader, HST, 4WD, Diesel, 1674 Hrs, PTO, 3-Pt., s/n H321461
John Deere 5310 Tractor, PTO, 3-Pt., 2300 Hrs, Canopy, Sync Shuttle, Front Counterweights, s/n LV5310S131784
Kubota L295DT Tractor/ Loader, 4WD, PTO, 3-Pt., Box Scraper

STREET SWEEPERS

2004 **Elgin Broom Bear** Street Sweeper Mtd. on Freightliner FL70 Chassis, Cat 3126, Automatic, 59000 Miles, 3447 Hrs, s/n 1FAVBTA54HM57558
 2001 **Elgin Eagle** Street Sweeper, Series F, Mtd. On Sterling SC8000 Chassis, Vin# 49HAADBUX1HH33727, 36164 Miles, 5499 Hrs, Cummins Front Diesel, Isuzu Rear Diesel, City Unit, s/n F1160D

FLOATER

1984 **International Floater 4030** 4WD, Cummins VT903A, Allison Automatic, Rear & Side Discharge, Tank Capacity Of 3000 Gallons, Vacuum Pressure Pump, 66x 43.00-25 Tires, (1) Extra Tire, City Unit



2006 KUBOTA L4330 TRACTOR, 4WD



CATERPILLAR 8000 LB. REACH FORKLIFT



2006 POWER SCREEN POWER GRID800 W/ 1400 HRS.



2001 ELGIN EAGLE STREET SWEEPER, CITY UNIT



2004 ELGIN BROOM BEAR STREET SWEEPER

BOOMLIFTS

1998 **Genie S60** Boomlift, 4WD, 60' Lift, Diesel, 1872 Hrs, s/n 2498
 (2) 1998 **Terex TB60** Boomlifts, 4WD, 60' Reach, Cummins Diesel, Foam Filled Tires; Low Hrs.
Terex CH44C Boomlift, 4WD, Gas, 44' Reach, s/n 7341
Genie Z45/22 Knuckleboom Lift, Electric, s/n 4588-1552
Simon MD60 Boomlift

ASPHALT ROLLERS, CONCRETE EQUIPMENT

2004 **Ingersoll Rand SD45D** Ride-On Asphalt Roller, TF Series, 363 Hrs, Cummins Diesel, 54" Front Drum, Canopy, s/n 176641
 (2) **Hyster C350B** Ride-On Asphalt Rollers, Double 54" Drums, Ex County
 (2) **Putzmizer** Towable Shot Crete Pumps, Deutz Diesel
 2005 **Norton Clipper** Walk-Behind Concrete Saw, Deutz Diesel, 80 Original Hrs.
Wacker RT Walk-Behind Sheepsfoot Roller, Double 32" Drums, Lombardini Diesel, Remote, s/n 5533827
 (2) **Wacker** Power Buggies w/ Honda Gas Engines, Foam Filled Tires

TRUCK TRACTORS

2004 **Peterbilt 379** Truck Tractor, T/A, Cat C15, 13-Spd., Wet Kit, Air Ride, Dual Fuel Tanks, 246" Wheel Base, Low Miles
 2001 **Kenworth T800** Truck Tractor, T/A, Cat C12, 435 HP, Auto Shift Transmission, Wet Kit, Jake Brake, Cruise Control
 2000 **Kenworth W900B** Truck Tractor, T/A, Detroit Series 60, 12.7 Litre, 13-Spd., Aerocab Sleeper, Air Ride
 2000 **Kenworth T800** Truck Tractor, T/A, N14 Cummins Red Top, 460 HP, 10-Spd., Wet Kit, Jake Brake, Flat Top Sleeper, Cruise Control
 1999 **Kenworth W900L** Truck Tractor, T/A, N14 Cummins, 10-Spd., Jake, Aero Cab Aero Dyne Sleeper, Aluminum Wheels
 (3) 1998 **Kenworth T600** Truck Tractors, T/A, Cat 3406E, 435 HP, 10-Spd., Wet Kit, Jake Brake
 1996 **Freightliner** Truck Tractor, T/A, Cummins M11, 15-Spd., Wet Kit, Merritt Aluminum Headache Rack, Hendrickson Suspension, County Unit
 1994 **Kenworth W900** Truck Tractor, T/A, Cat 3406, 15-Spd., Wet Kit, Air Ride, Merritt Aluminum Headache Rack
 1989 **Peterbilt 377** Truck Tractor, T/A, 425 Cat, 10-Spd., Wet Kit
 1989 **Western Star** Truck Tractor, T/A, Cat 3406, 15-Spd., Sleeper, Air Ride
 1992 **Isuzu FSR** Cab & Chassis, Crew Cab, Diesel, Automatic

FLATBED TRUCKS

(5) 2006 **Ford F350XL** Flatbed Trucks, Super Duty, Power Stroke V8 6.0 Litre Diesel, Crew Cab, 9 Ft Bed, Dually, Automatic
 1999 **Ford F350** Stake Body Truck, 4WD, 12' Bed, Super Duty, Power Stroke Diesel, Dually, Hydraulic Lift Gate
 1991 **Dodge Ram 3500** Flatbed Truck, Cummins, 5-Spd.
 1983 **International** Flatbed Truck, 1-Axle, DT466, 24' Bed
Many More to Be Added!!

DUMPTRUCKS & ROLLOFF TRUCK

2000 **Sterling LT9500** Dumptruck, T/A, Cummins M11 Plus, 15-Spd., Hendrickson Suspension, Tarp, Snowplow, Sander, County Unit
 1995 **Kenworth T600** Dumptruck, T/A, Detroit Series 60, 430 HP, 12.7 Litre, 10-Spd., 17' Box, Tarp, Air Ride
 1992 **Peterbilt 377** Dumptruck, T/A, 425 Cat, 13-Spd., Air Ride, 14' Box w/ Tarp
 1985 **GMC Brigadier** Dumptruck, T/A, Detroit 6V92 Diesel Engine, 8-Spd., Double Frame, Hendrickson Suspension, 14' Box, Timpte 12' Snowplow, Ex County Unit
 1999 **Ford F-Series** Dumptruck, 1-Axle, Cummins Diesel, Allison Automatic
 1979 **Ford L9000** Rolloff Truck w/ Galbreath 23' Bed, 50000 lb. Capacity, 290 HP, 9-Spd.

TIRE TRUCK, SERVICE TRUCKS, VAN BODY TRUCKS

2000 **Ford F450** Tire Truck, Power Stroke 7.3 Litre Diesel, Automatic, A/C, Aluminum Bed, 1800 lb. Liftgate, Under Deck Air Compressor, Air Storage Tank Is Missing
 1987 **Ford F700** Service Truck w/ Auto Crane, Welder, Air Compressor, 6.6 Litre Diesel, 5+2 Spd., Ex County Truck
 2000 **Ford F250XL** Utility Truck, Super Duty, 4WD, 5-Spd., Power Stroke 7.3 Litre Diesel, Extended Cab
 1988 **Ford F450** Compressor Truck, Gas, 5-Spd., Grimmer Schmidt Air Compressor
 1993 **Chevrolet 1-Ton 4WD** Utility Truck Assorted Van Body Trucks

WATER TRUCKS

1995 **Oshkosh** Water Truck, 6 x 6, L10 Cummins, 21000 lb. Front, 46000 lb. Rear, 4500 Gallon Capacity, 2-Spd. Transfer Case
 1992 **International 4700** Water Truck, 1500 Gallon Aluminum Tank, DTA360, Automatic

PICKUP TRUCKS

1986 **Ford F350** Pickup Truck, 4WD, Extended Cab, Power Stroke Diesel, Dually
 2001 **Ford F250XL** Pickup Truck, Super Duty, 4WD, Extended Cab, Power Stroke 7.3 Litre Diesel
 2000 **Chevrolet 3500** Pickup Truck
 1999 **Chevrolet C3500HD** Pickup Truck, 4WD, Crew Cab, Front Winch
 1997 **Dodge Dakota SLT** Pickup Truck, 4WD, Extended Cab, Magnum V8
 1997 **Ford F350** Utility Truck
 1993 **Ford F350** Pickup Truck w/ Dump Bed, Snowplow, 4WD, Ramsey Winch, Auto Crane 3200 lb. Truck Hoist
 1998 **Chevrolet 1-Ton** Crew Cab Pickup
Many More To Be Added!!

LOWBOYS, HYDRAULIC TAIL TRAILER, & FLATBEDS

2007 **Kalyn Siebert** 40-Ton Step Deck Trailer, 48' x 102", Spread Axle
 2005 **Fontaine Specialized** 35-Ton Lowboy Trailer, 48' By 102", Set Up For Flip 3rd Axle, 29' 2" In Well, Air Ride
 1999 **Trail King TK70SA-48** Hydraulic Tail Trailer, 48' Overall Length, Pony Motor, 87260 lb. GVWR, Braden Winch
 1993 **Transcraft** Flatbed Trailer, 48' By 96" Wide, Air Ride, Spread Axle, Sliding Winches
 1984 **Great Dane 42'** Flatbed Trailer
Fontaine Step Deck Trailer
Timpte 42' Flatbed Trailer



1995 KENWORTH T600 DUMP TRUCK W/ DETROIT



2000 STERLING LT9500 DUMP TRUCK W/ CUMMINS M11 PLUS



1995 OSHKOSH 4500 GALLON WATER TRUCK



2005 FONTAINE 35-TON LOWBOY TRAILER



35' ROCK TRAILER

END DUMP TRAILERS, BELLY DUMP TRAILERS

Rock Trailer, T/A, 35' Long, Frameless
 2005 **Eagle** Rock Aluminum End Dump Trailer, 37' Long, 68000 lb. GVWR
 2000 **Travis 39'** Aluminum V-Bottom End Dump Trailer
 (2) **Spartan** Belly Dump Trailers, Double Gate, T/A, 20 Cu. Yard, Ex County
 1985 **Hobbs** End Dump Trailer, Frame Type, 31' Long, 24.5 Budd Wheels, High Sides
 1992 **Red River** Belly Dump Trailer, Single Gate, Electric Tarp, 67000 lb. GVWR
Timpte Belly Dump Trailer, Double Gate, T/A

REEFER & VAN STORAGE TRAILERS

2000 **Great Dane 48'** Reefer Trailer w/ Thermo King Unit, Under Mount Diesel Fuel Tank
 1993 **Utility 48'** Reefer Trailer, Carrier Unit
 1993 **Great Dane 53'** Dry Storage Van Trailer, Air Ride
 1999 **Utility 53'** Dry Storage Van Trailer, Air Ride
 (10) 28' Dry Storage Van Trailers

STEEL STORAGE CONTAINERS

(4) 40' Steel Storage Container
 (7) 20' Steel Storage Container

ASSORTED TRAILERS

A Great Selection Of Equipment Trailers Consisting Of: Tilt Decks, Enclosed Trailers, Hydraulic Dump Trailers, T/A, Goosenecks, Etc.
 1984 **Trail King TKT-20** Equipment Trailer, T/A, Duals, Air Brakes, Pintle, 10-Ton Capacity
 1984 **Trail King TKT-20** Equipment Trailer, T/A, Duals, Tilt Deck, Air Brakes, Pintle, 10-Ton Capacity
Hyster Equipment Trailer, T/A, Duals, Tilt Deck, 20-Ton Capacity 27' Deck, Pintle, Air Brakes
 1972 **Miller** Equipment Trailer, 3-Axle, 10-Ton Capacity, 18' Deck, Pintle
 2005 **Forest River 28'** Race Car Trailer, A/C, Side Door, 12,000 lb. GVWR
 1997 **S&H** Coil Pipe Trailer, 1-Axle, Recurve Unit, Pintle
 Car Dollies
Cottrell 6-Car Hauler, T/A, Hydraulic

CARS, MOTORHOMES, FIRE TRUCKS

1965 **Ford** Mustang, 289, Automatic
 1968 **Ford** Mustang
 1979 **Ford** Country Squire Station Wagon, 28K Original Miles
 1999 **Rockwood** Pop-Up Camper, 14' Long, Slide out, Shower & Toilet
 1984 **Pace Arrow** Motorhome, 30' Long, 454 Gas, Loaded
 1987 **Ford Econoline 350** Bus Setup For Mobile Office
 1971 **Ford F750** Fire Truck
Mack Fire Truck

WELDER, GENERATORS, LIGHT TOWER

1996 **Lincoln Commander 400** Skid Mtd. Welder, 400 Amp, Deutz Diesel
 1998 **Multiquip DCA70SSJU** Towable Generator, 40KW, 3-Phase, John Deere Diesel, s/n 7301012
Wacker Towable Light Tower, Kubota Diesel, Electric Winch, 4-Light, 30' Mast, 2131 Hrs, s/n 762101034
 Over (40) New Portable Generators



2004 PETERBILT 379 TRUCK
TRACTOR W/ CAT C15



SPARTAN BELLY DUMP TRAILER,
DBL. GATE, (1 OF 2)



2006 FORD F350XL FLATBED TRUCK
W/ POWER STROKE, (1 OF 5)



PETERBILT 377 TRUCK
TRACTOR W/ 425 CAT



1999 TRAIL KING 48' HYDRAULIC
TAIL TRAILER

UTILITY VEHICLES, MISCELLANEOUS

2005 **Kubota** RTV900 Utility Vehicle, 4WD,
Diesel, Hydraulic Dump Bed, 300 Hrs.
Kubota RTV900 Utility Vehicle, 4WD,
Diesel, Dump Bed, 355 Hrs.
(2) **Kawasaki** Mule 2510 Trucksters, 4WD,
Diesel, Manual Dump Bed
2006 **Vespa** Motorcycle
(2) 2002 **Malagati** Mopeds
2000 **Glastron** Boat w/ Volvo Penta
ATV's
(4) **Toro** Sand Pro 5020
New Pumps & Scaffolding
New Geotop Surveying Equipment
V-Box Sander, 8'

ATTACHMENTS

Large Assortment Of Skid Steer Attachments:
Brooms, Forks, Posthole Diggers
Assortment Of Skid Steer Buckets & Backhoe
Buckets
Wannamaker Roller/Level Skid Steer
Attachment
Caterpillar Grader Circles
Great Assortment Of Tractor & Farm
Implements

EQUIPMENT FROM:

Adams County	Qwest
Jefferson County	Xcel Energy
Weld County	Local Contractors
Wagner Rents	Banks & Leasing
Sunbelt Rentals	Companies



2000 KENWORTH W900B TRUCK
TRACTOR W/ DETROIT



HOBBS STEEL END DUMP TRAILER,
FRAME TYPE



PETERBILT 377 DUMPTRUCK
W/ 425 CAT



1965 FORD MUSTANG W/ 289



UTILITY 48' TRAILER W/ CARRIER
REEFER UNIT



2003 CATERPILLAR 924G
WHEEL LOADER



CATERPILLAR 112 MOTOR
GRADER W/ PONY MOTOR



40' STEEL STORAGE CONTAINER,
(1 OF 4)



KAWASAKI MULE 2510
TRUCKSTER, 4WD, (1 OF 2)



HYSTER 10,000 LB. DIESEL
FORKLIFT

Live Online Bidding
www.proxibid.com



2000 JOHN DEERE 4200
TRACTOR/ LOADER, (1 OF 2)



JOHN DEERE 5310 TRACTOR



2004 INGERSOLL RAND SD45D
RIDE-ON ASPHALT ROLLER



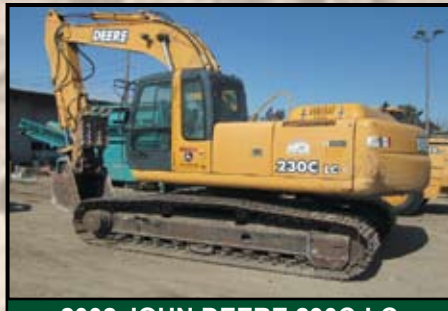
DITCHWITCH 410SX CABLE PULLER
W/ TRENCHER & ROTOWITCH
(1 OF 5)



DRESSER 510 WHEEL LOADER



FIAT ALLIS FR15B WHEEL LOADER



2002 JOHN DEERE 230C-LC
HYDRAULIC EXCAVATOR



JOHN DEERE 770BH MOTOR
GRADER, EX COUNTY

**Don't Miss Our Upcoming
RENTAL YARD & TOOL AUCTION**
THURSDAY • MARCH 20th • 9:00am
Inspection: Wednesday, March 19th from 9am to 4pm
7500 York Street • Denver, CO
OVER 1000 LOTS
Now Taking Consignments - Contact Tim DeLay
(303) 289-1600 x 108

BIDDERS' INFORMATION

DATE: Thursday, March 13th, 2008

TIME: 9:00 A.M.

ADDRESS: ADAMS COUNTY FAIRGROUNDS,

9755 Henderson Rd., Henderson (Brighton), CO

DIRECTIONS: From Denver take I-25 to I-76

East to Hwy. 85 north to 124th Avenue. Go

West to the Fairgrounds. From Brighton take

Hwy. 85 South to 124th Avenue and go West

to the Fairgrounds. **Watch for Auction Signs.**

INSPECTION: Wednesday, March 12th, from 9am

to 4:00pm and the morning of the auction at 8am.

INTERNET PURCHASES: All purchases

through proxibid will be assessed a 3% Buyers'

Premium. This will be added to the purchase

price and is subject to all applicable sales taxes.

PAYMENT: Full payment required on day of

auction in cash, certified funds, bank wire

transfer, checks up to \$2,000, Visa, MasterCard or

Discover. *Unless paying in cash or equivalent,*

buyers are subject to an additional 3%

Buyers' Premium. Checks written for over

\$2,000 must have a bank letter of guarantee.

REMOVAL: All purchases must be removed at

buyers expense and responsibility by 4:00 P.M.

Tuesday, March 18th, 2008. Saturday &

Sunday removal from 9:00am to 3:00pm.

7500 York Street

Denver, CO 80229

(303) 289-1600

www.rollerauction.com



Vehicles sold through
Roller & Associates
used motor vehicle
dealer #3255.



18th Annual Spring

CONSTRUCTION & CONTRACTING EQUIPMENT

AUCTION

AT THE ADAMS COUNTY FAIRGROUNDS

9755 Henderson Rd., Henderson, (Brighton) Colorado

THURSDAY • MARCH 13th • 9:00 A.M.

Inspection: Wednesday, March 12th from 9:00 A.M. to 4:00 P.M.

and the Morning of the Auction

Live Online
Bidding

proxibid



2006 CATERPILLAR 247B SKID
STEER LOADER W/ 971 HRS.



2000 JOHN DEERE 770CH MOTOR
GRADER, EX COUNTY

ADDITIONAL
EQUIPMENT
WILL BE
ADDED